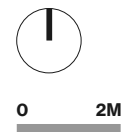
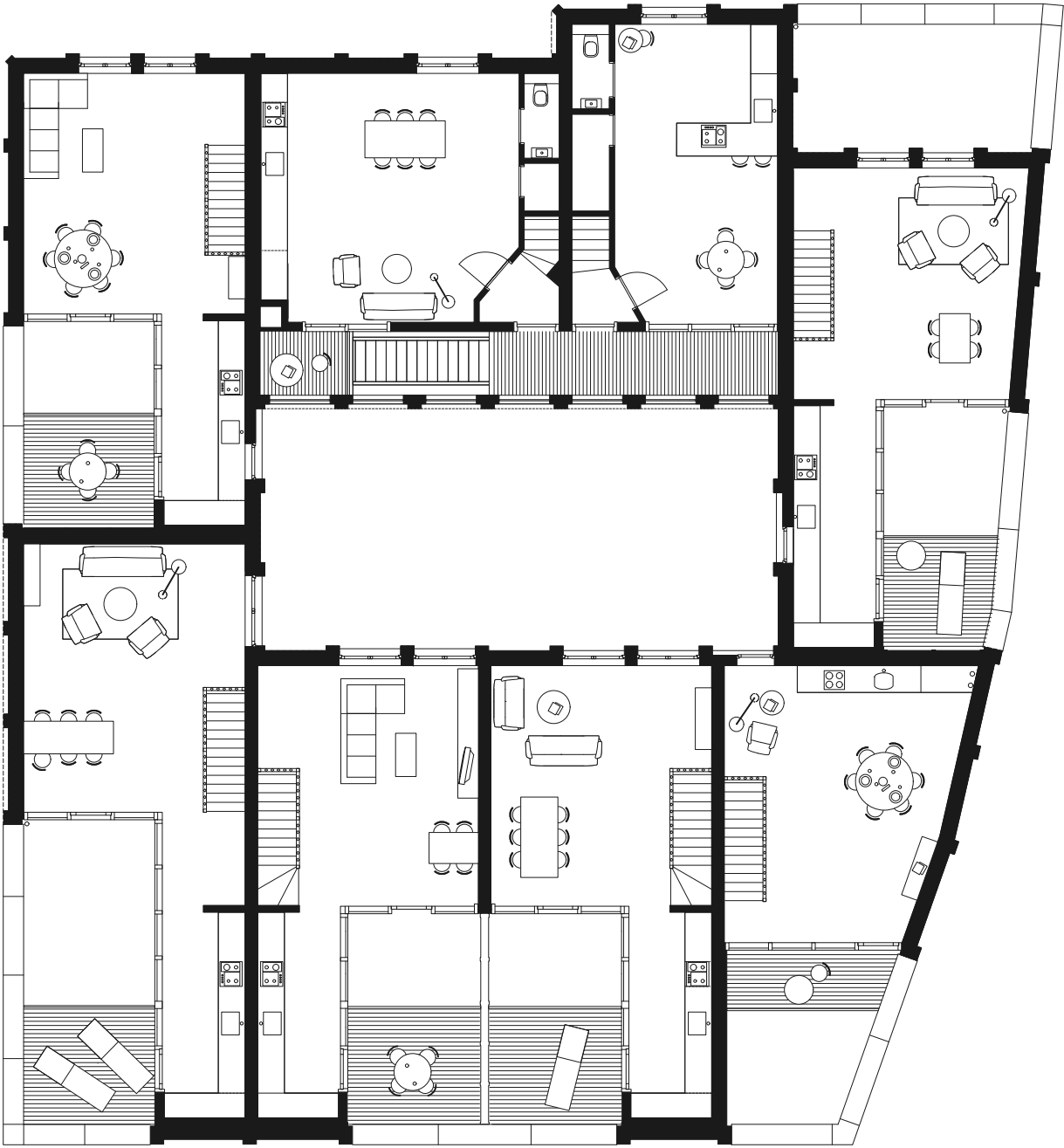




Ground floor plan. Bedrooms are at ground floor level, with windows to either a communal or private courtyard spaces.

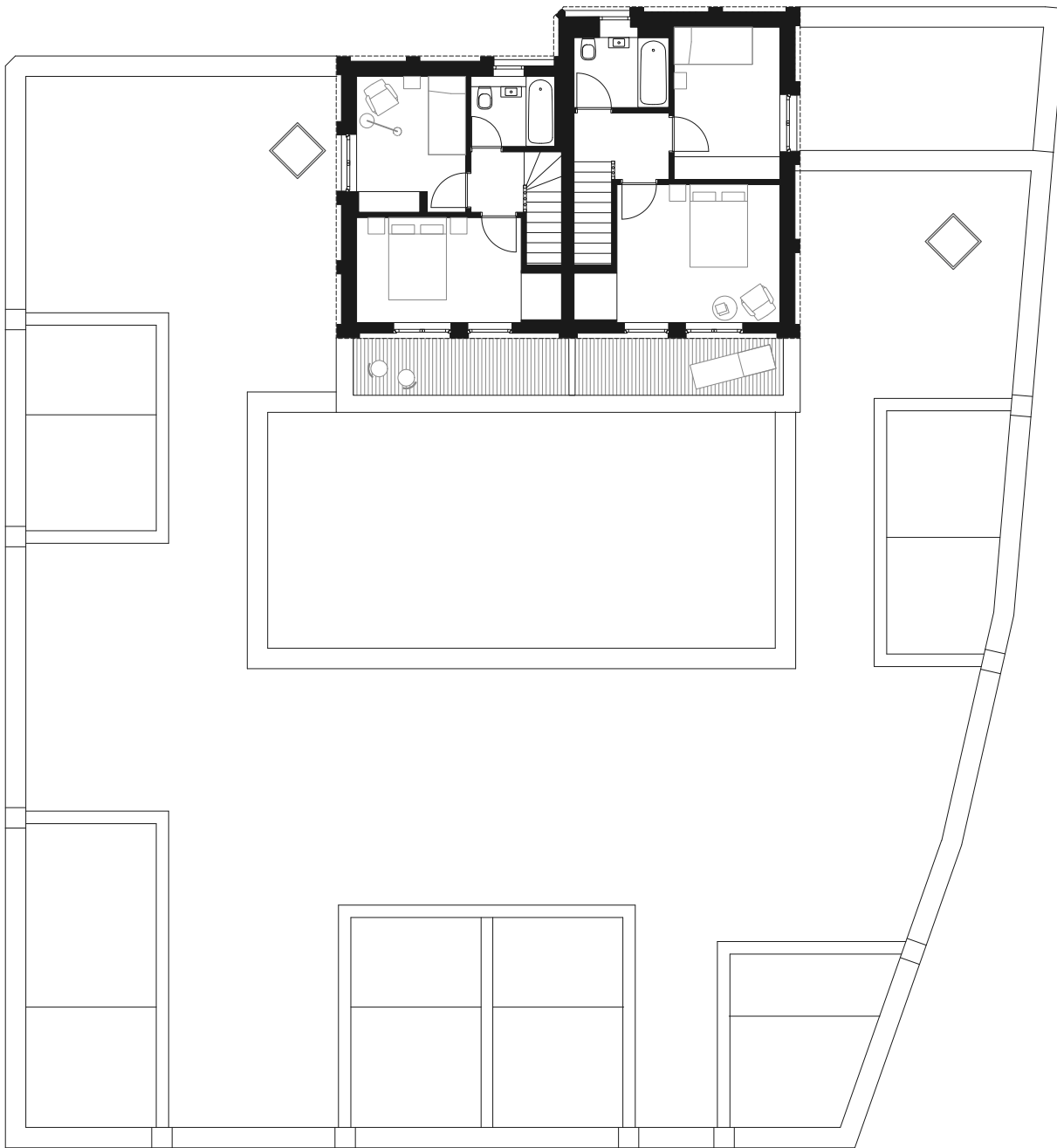




First floor plan. Living spaces are placed at first floor level where they can benefit from the greater potential for outlook and daylighting. External terraces reduce the impact of the development and allow daylight to penetrate deep into the apartments.



0 2M



Second floor plan.  
Three-storey dwellings are placed to the north of the site so as to minimise the impact on neighbours.

