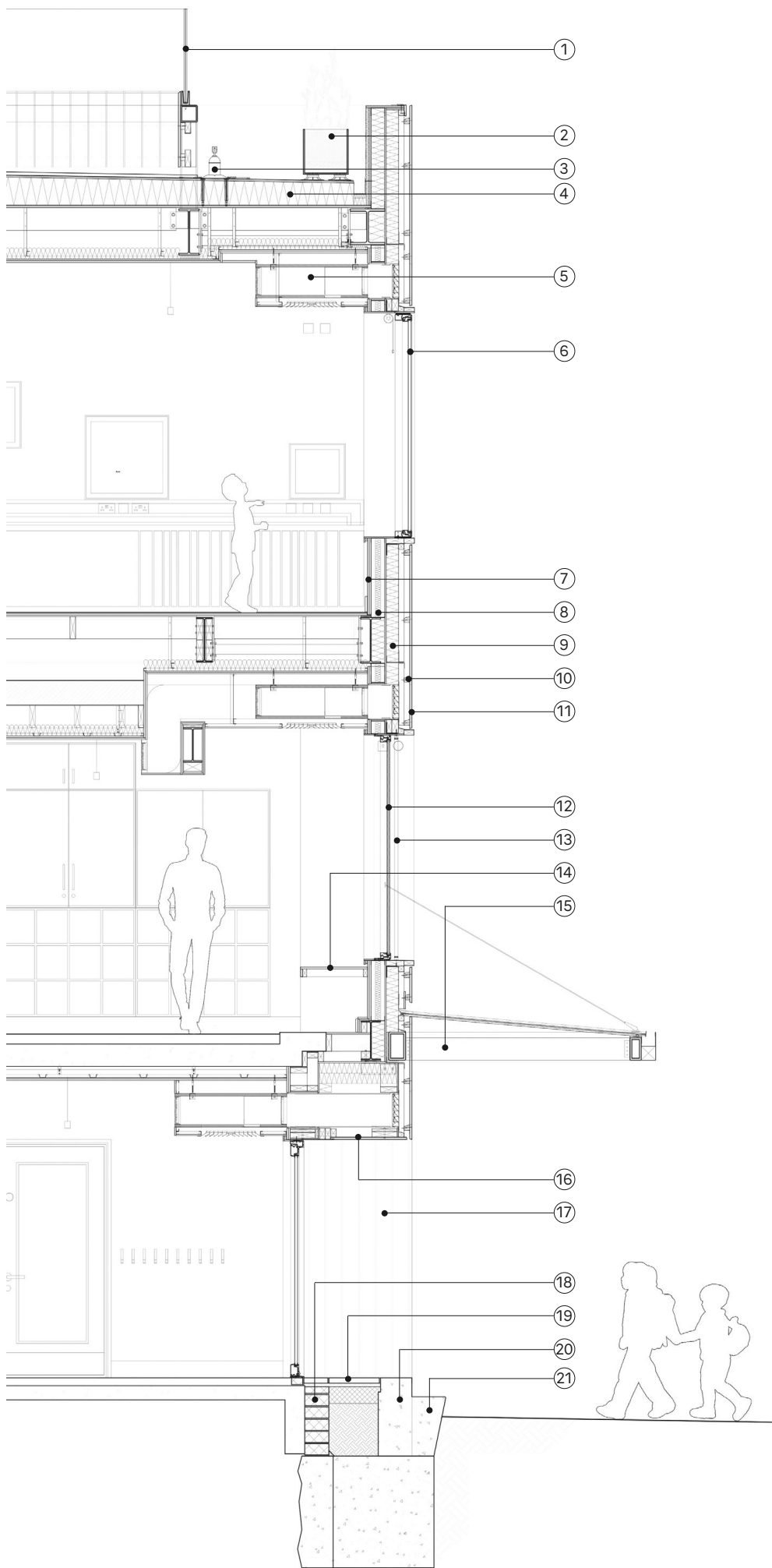


Detailed section showing wall construction

- 1
Frameless glass guarding to rooftop playground
- 2
Timber rooftop planters
- 3
ManSafe protection from falling for maintenance staff
- 4
Hertalan tiles on CCM tapered insulation
- 5
NVHR ventilation for classrooms
- 6
Aluminium-framed Ideal Combi windows and doors
- 7
British Gypsum SoundBloc plasterboard
- 8
Mineral-wool insulation
- 9
Rainscreen board
- 10
Vertical battens
- 11
Accoya timber cladding
- 12
Insulated aluminium-faced opening vent
- 13
Aluminium-clad window and door reveals
- 14
Window desk
- 15
Steel-framed canopy with timber joists and polycarbonate glazing
- 16
Timber-clad vented soffit with Kingspan insulation
- 17
Accoya timber-clad reveals to doors
- 18
Blockwork support to doors
- 19
Accoya decking on treated timber battens
- 20
Painted concrete plinth
- 21
Concrete steps to classrooms



**Construction
sequence diagram**

1
Temporary corrugated
metal roof
constructed
above school

2
Scaffolding
constructed around
school perimeter at
first and second
floor levels

3
Scaffolding
constructed so school
can be entered and
manoeuvred around
normally

4
Temporary stairs
within scaffolding

5
Excavations around
school perimeter for
installation of
foundations

6
Superstructure
installed around
school

7
West staircase
constructed

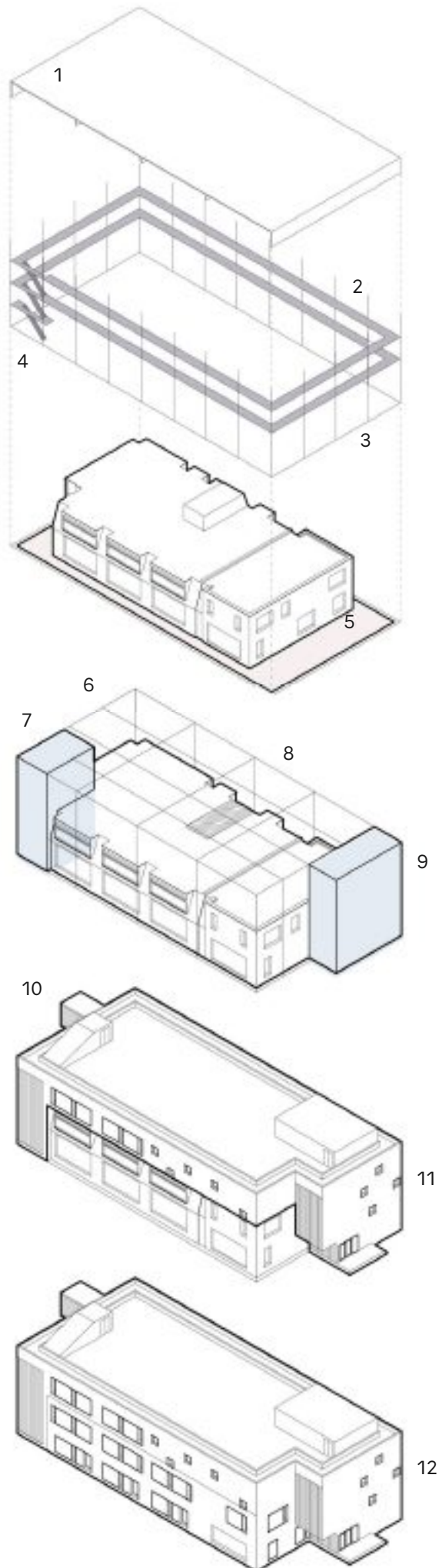
8
Existing plant room
removed

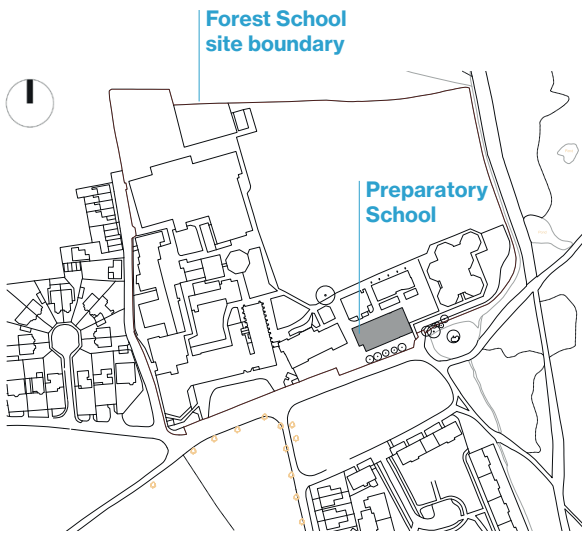
9
East staircase
constructed

10
New bridge
connection to existing
Whitmore building
constructed

11
East and west
staircases, second
floor and roof,
constructed

12
All remaining
windows, doors,
internal and external
walls to ground and
first floors



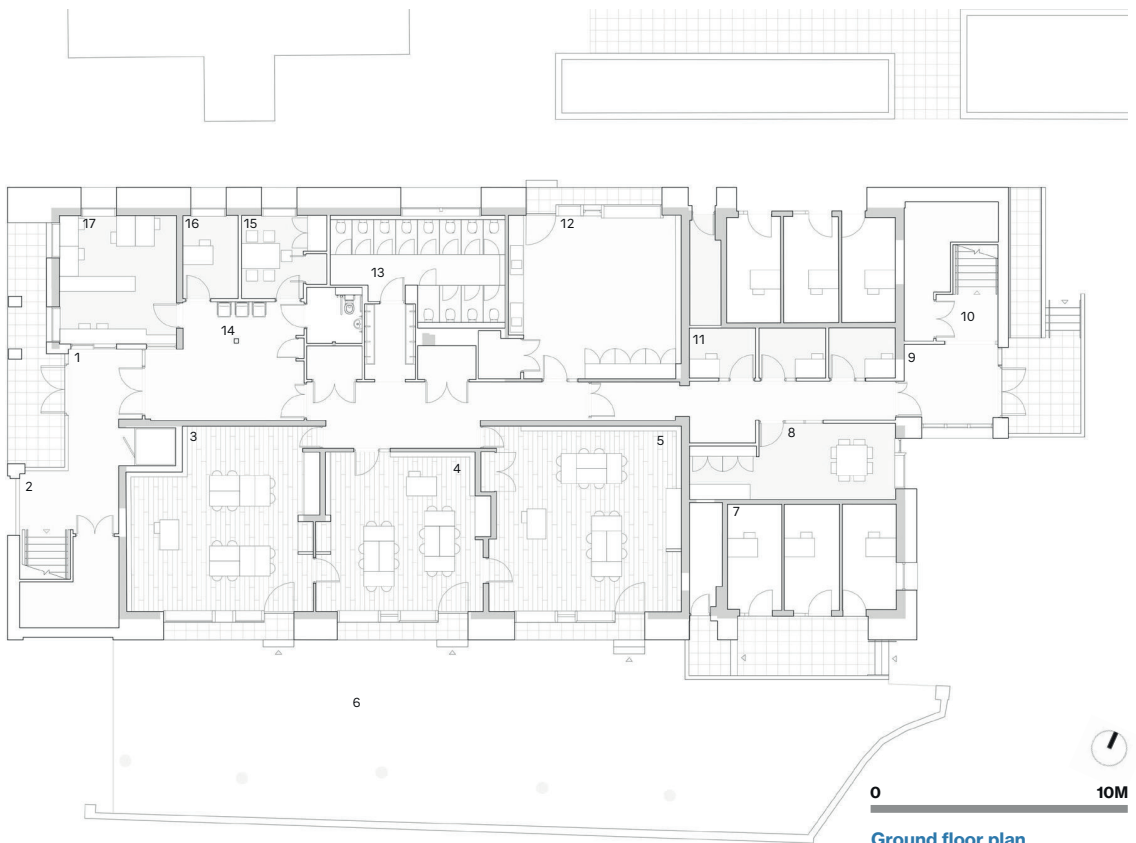


Location plan



Above: West elevation.
The outline of the existing building is indicated in red.

- 1 Main entrance
- 2 West staircase
- 3 Reception A
- 4 Reception B
- 5 Reception C
- 6 Reception playground
- 7 Housemistress offices
- 8 Staff room
- 9 East entrance
- 10 East staircase
- 11 Offices
- 12 Art
- 13 Unisex toilets
- 14 Waiting area
- 15 Meeting room
- 16 Operations
- 17 School reception



Ground floor plan